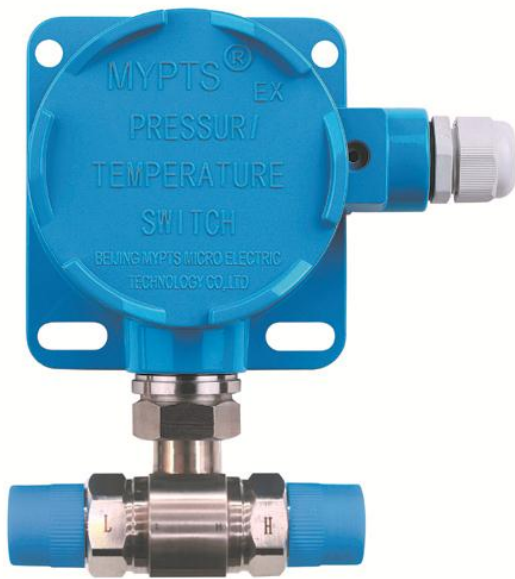
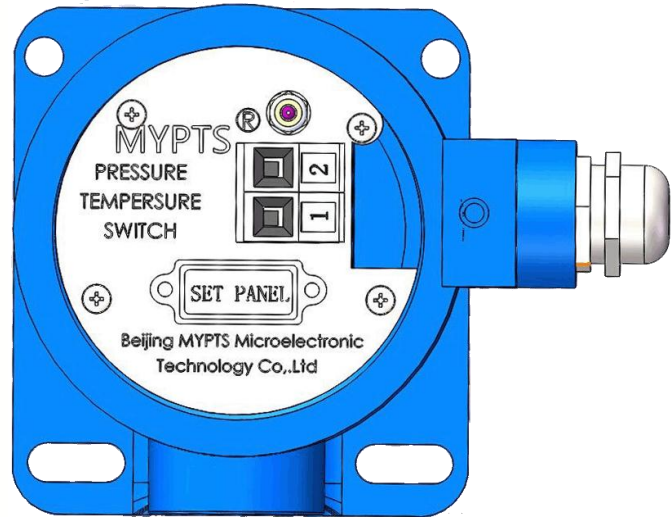


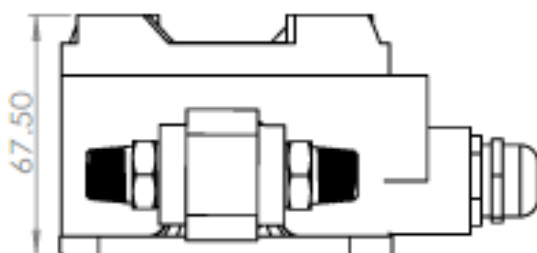
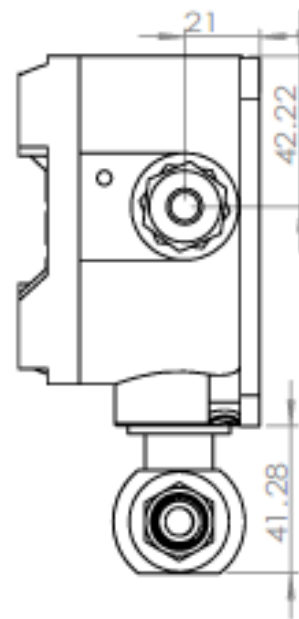
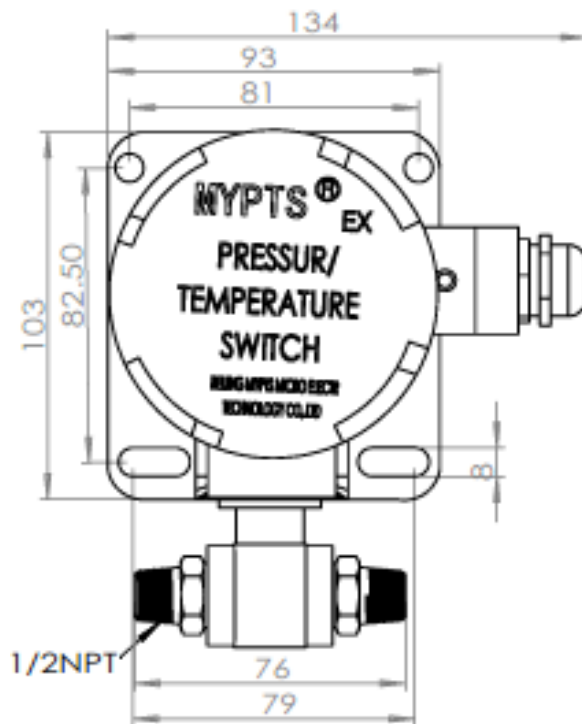
Explosion-proof microelectronic differential pressure switch



Product



Control Panel



Specification and models

| MEDPS- | General microelectronic differential pressure switch | | | | | |
|--------|--|------------------|--|--|---|----------------------|
| | Code | Setting range | | | | |
| | A | 0~10 kPa | | | | |
| | B | 0~35 kPa | | | | |
| | C | 0~100 kPa | | | | |
| | D | 0~0.6 MPa | | | | |
| | E | 0~2 MPa | | | | |
| | F | 0~3.5 MPa | | | | |
| | O | Customer request | | | | |
| | | Code | Structure material | | | |
| | | | sensor | Joint | Shell | |
| | | N | 316LStainless Steel | 316LStainless Steel | Aluminium alloy | |
| | | X | Per customer requirements (Except shell) | | | |
| | | | Code | Interconnect | | |
| | | | N | Horizontal joint 1/2 NPT external screw thread | | |
| | | | Y | Horizontal joint 1/4NPT internal screw thread | | |
| | | | X | Customer request | | |
| | | | | Code | Electrical connection | |
| | | | | N | Terminal, M20x1.5 standard waterproof cable connector | |
| | | | | X | Customer request | |
| | | | | | Code | Safe location |
| | | | | | EP | Explosion-proof type |

Note:

- ** Beyond the standard setting range, select code "O" to specify the specific range.
- ** Code A、 B、 C operating temperature : -10~80°C。
- ** Maximum system differential static pressure allowed: normal is 20 Mpa; High is 42 Mpa.
- ** It is recommended that the minimum Set Value is NOT less than 2% of the measuring range.
- ** Maximum differential pressure allowed: 2.5 times of measuring range.
- ** Suitable for use in non-corrosive environment to 316L stainless steel interconnect and Aluminium alloy shell
- ** If code X is selected for interconnect, the connector can ONLY be customized based on 1/2 NPT.
- ** When Code X is opted for Electrical Connection, incoming cable joints can be customized, but terminal wiring specifications cannot be altered.